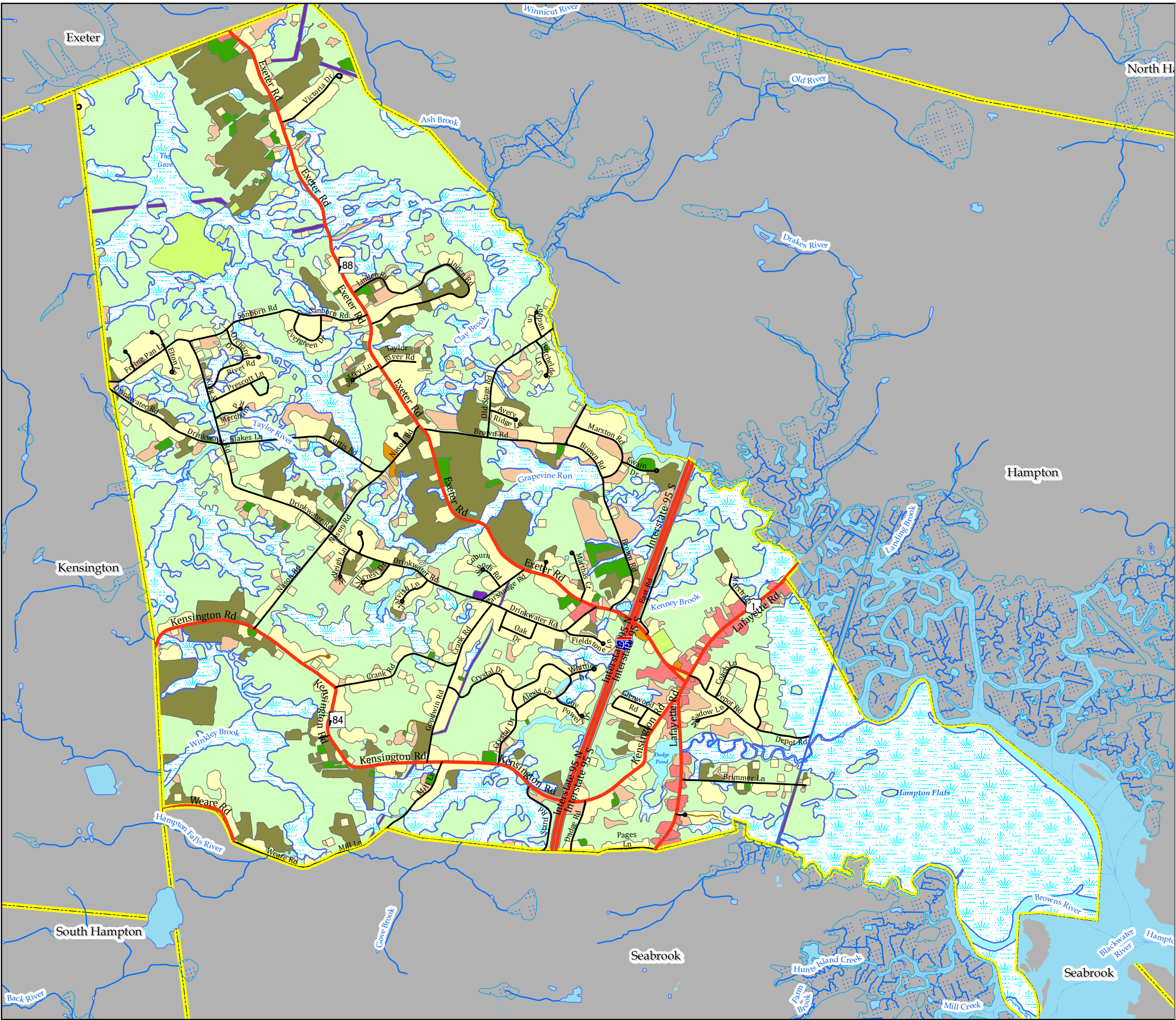


Hampton Falls Master Plan Map 1 - 2015 Land Use



Legend

Land Use 2015

- Active Agricultural
- Aux Transportation
- Farmsteads
- Forested
- Industrial/Commercial
- Mixed Urban
- Open Wetlands
- Other/Idle
- Playing fields / Recreation
- Railroad
- Residential
- Transportation
- Utilities
- Water

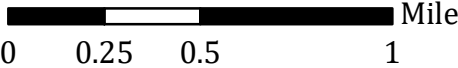
NHDoT Roads 2018

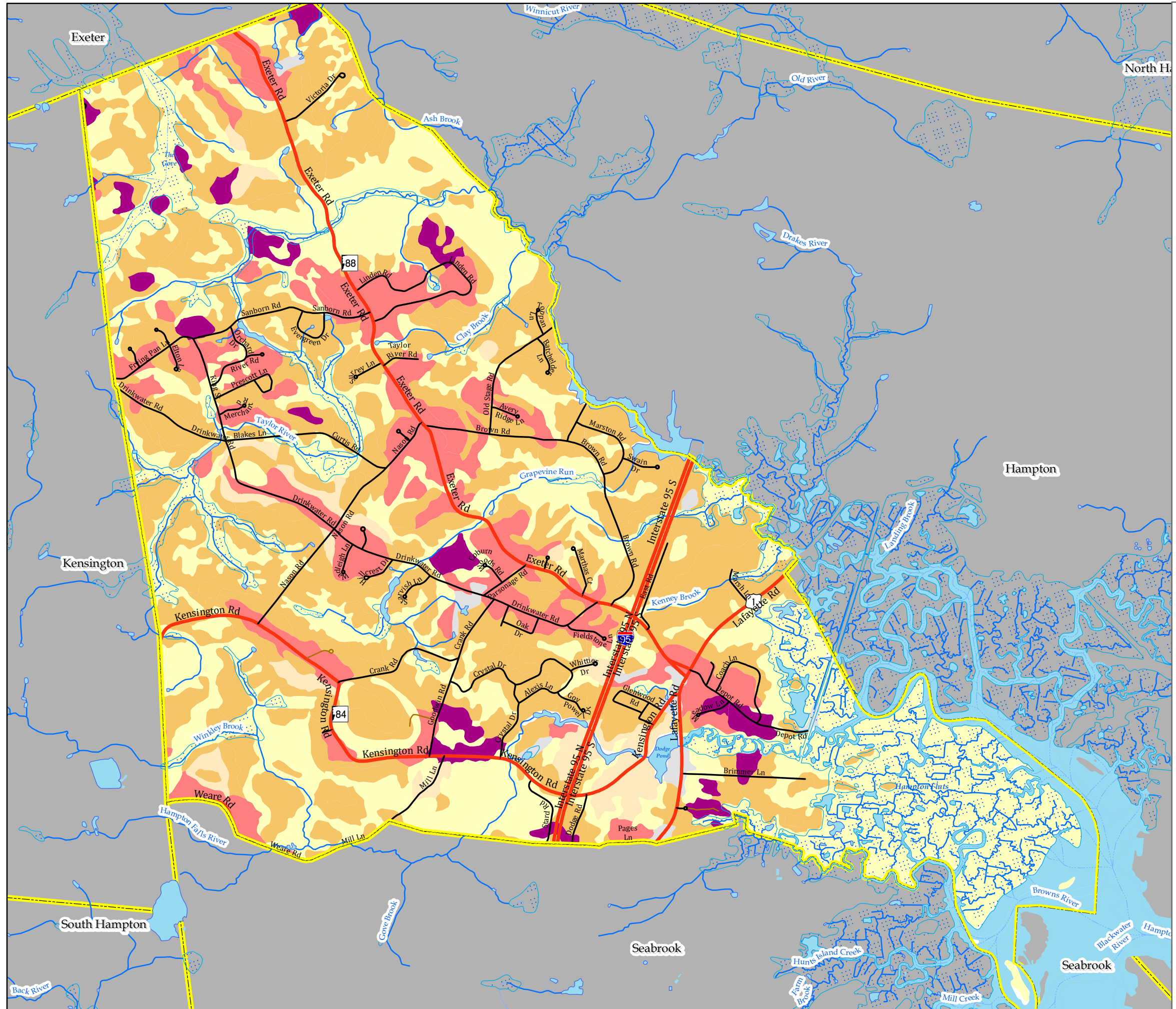
- Interstate/ State
- Local
- Private
- Not Maintained

- Town Boundary
- Waterbody
- Swamp/Marsh
- Stream / River
- Other Flow Line



1 in = 0.5 miles





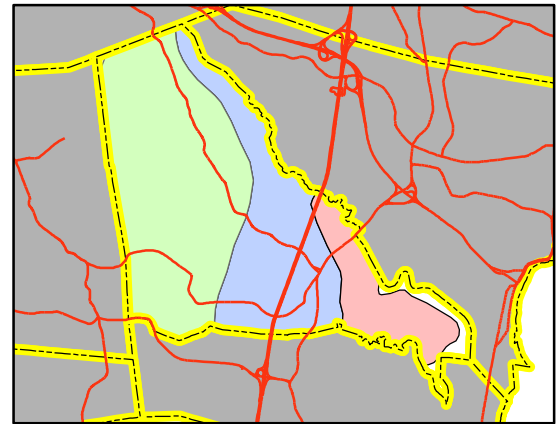
Legend

Soil Potential Ratings for Dev.

- Very High
- High
- Medium
- Low
- Very Low
- No Rating
- n/a

General Soils

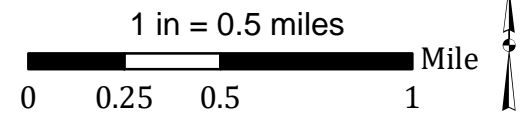
- IPSWICH-WESTBROOK-UDIPSAMMENTS (NH016)
- HOOSIC-PAXTON-PENNICHUCK (NH003)
- HOOSIC-CANTON-CHATFIELD (NH009)

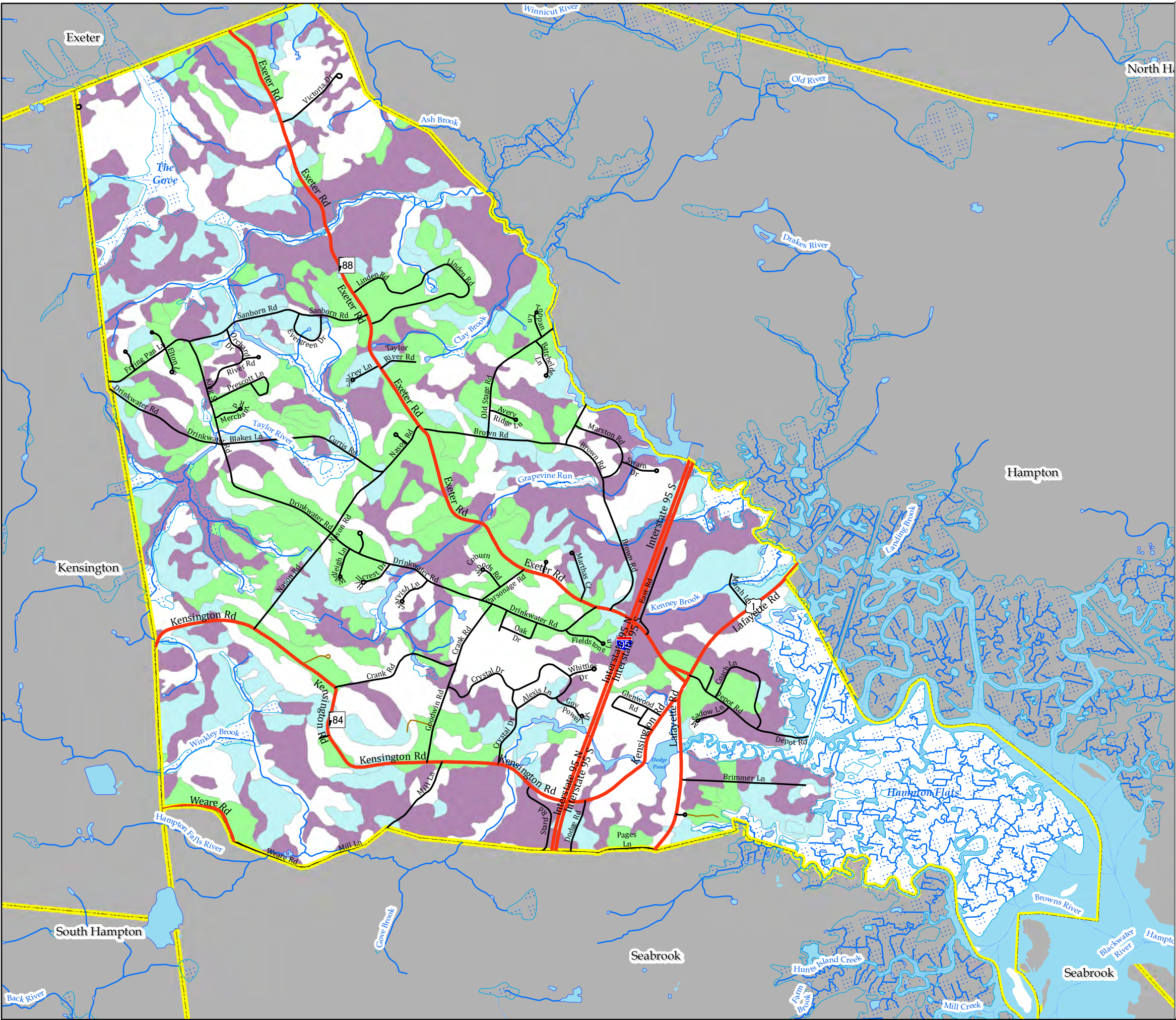


- Town Boundary
- State Road
- Local Road
- Unmaintained Road
- Private Road
- Waterbody
- Swamp/Marsh
- Stream / River
- Other Flow Line

ROCKINGHAM PLANNING COMMISSION

theRPC.org





Legend

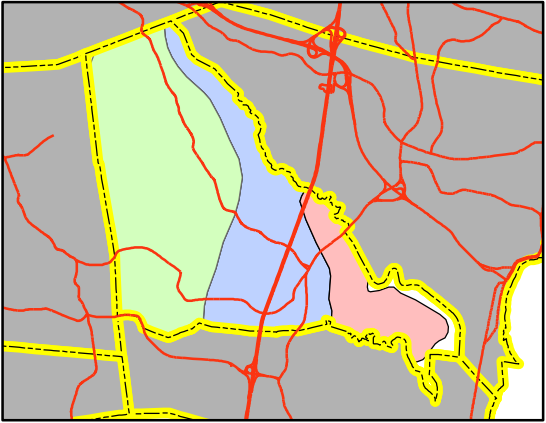
Farmland Soils

Class type

- All areas are prime farmland
- Farmland of local importance
- Farmland of statewide importance

General Soils

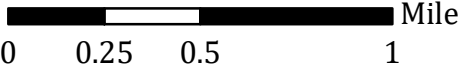
- IPSWICH-WESTBROOK-UDIPSAMMENTS (NH016)
- HOOSIC-PAXTON-PENNICHUCK (NH003)
- HOOSIC-CANTON-CHATFIELD (NH009)

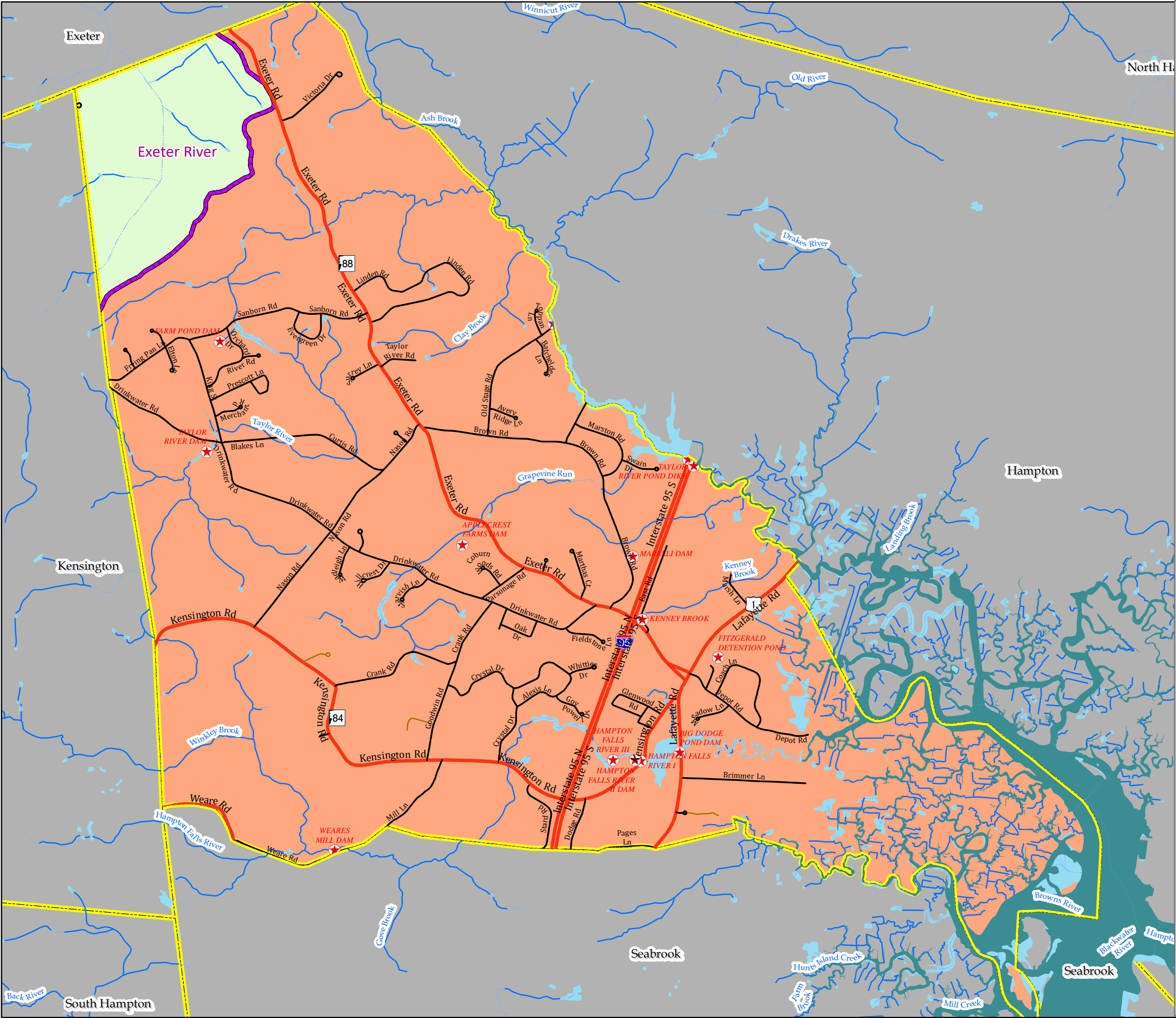


- Town Boundary
- State Road
- Local Road
- Unmaintained Road
- Private Road
- Waterbody
- Swamp/Marsh
- Stream / River
- Other Flow Line



1 in = 0.5 miles





Legend

★ NHDES Dam Inventory

Water Bodies

Tidal/Estuarine

Freshwater

Watershed Name (HUC 10)

Coastal Drainage

Exeter River

Town Boundary

State Road

Local Road

Unmaintained Road

Private Road

Waterbody

Swamp/Marsh

Stream / River

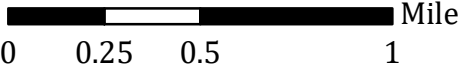
Other Flow Line




ROCKINGHAM
PLANNING
COMMISSION

theRPC.org










1 in = 0.5 miles



Legend

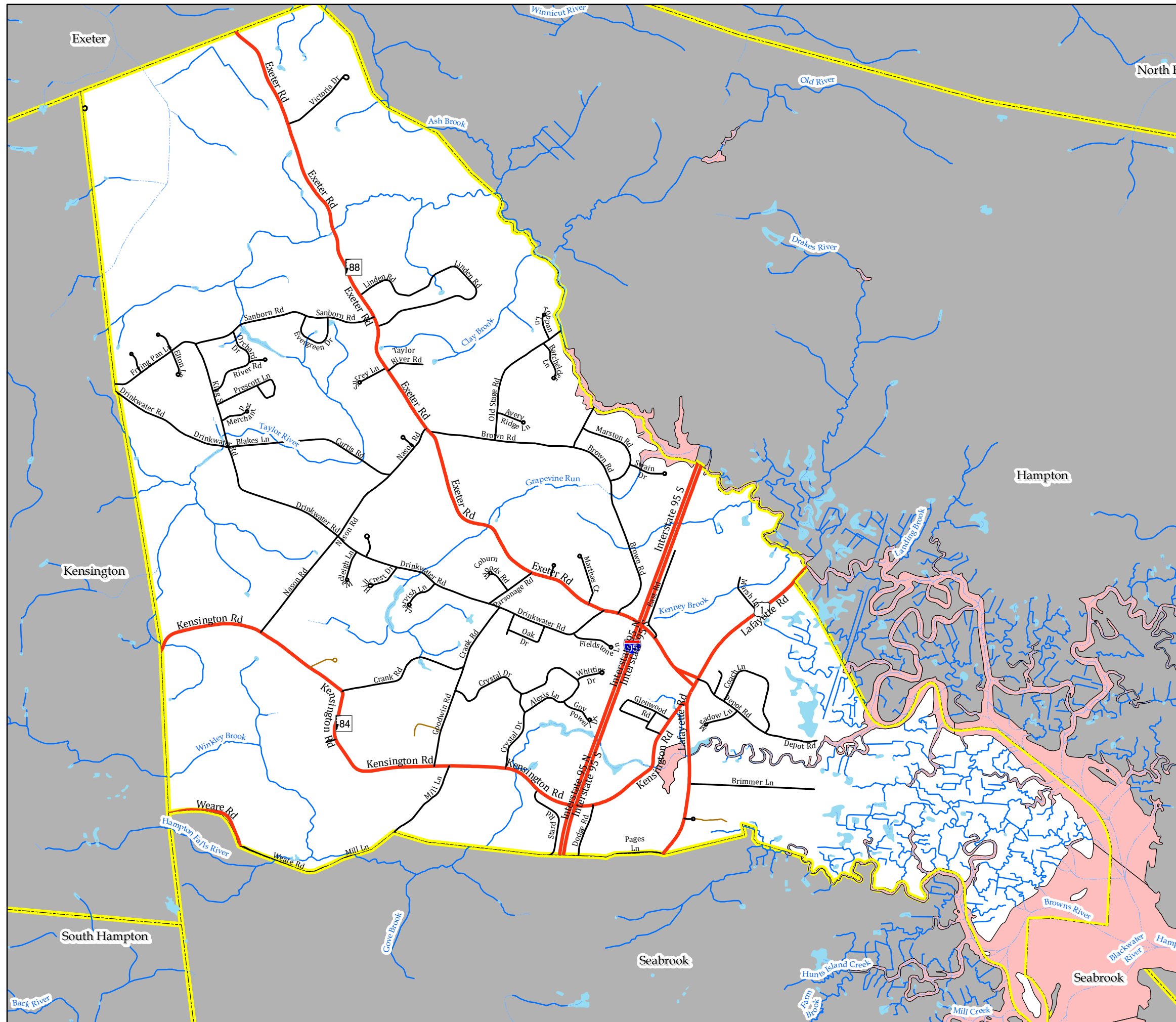
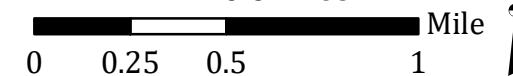
-  Water Features Affected by CSPA
* Comprehensive Shoreline Protection Act (since redacted)

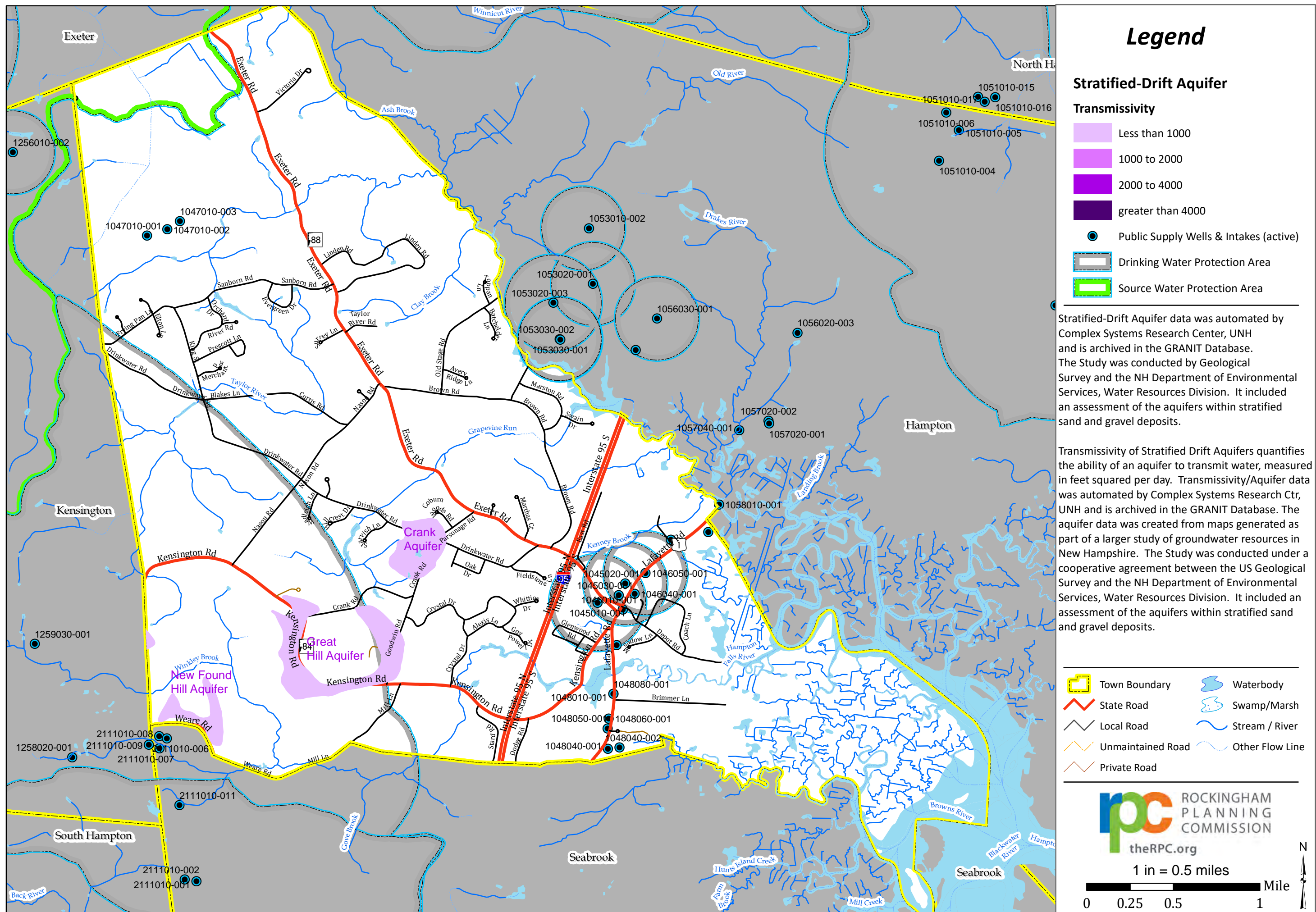
The CSPA map was produced in an effort to help towns implement the updated CSPA regulations. This map shows the waterbodies in Hampton Falls on top of a base map. Waterbodies/ Rivers that are governed by the updated CSPA will also show three buffers as specified by the CSPA (50', 150', and 250'). This map is a geographical representation of the data found listed in the report Consolidated List of Water Bodies Subject to RSA 483-B (<http://bit.ly/2eRXbwF>).

- | | |
|---|---|
|  Town Boundary |  Waterbody |
|  State Road |  Swamp/Marsh |
|  Local Road |  Stream / River |
|  Unmaintained Road |  Other Flow Line |
|  Private Road | |



1 in = 0.5 miles





Legend

Wildlife Action Plan (2010)

Highest Ranked Habitat

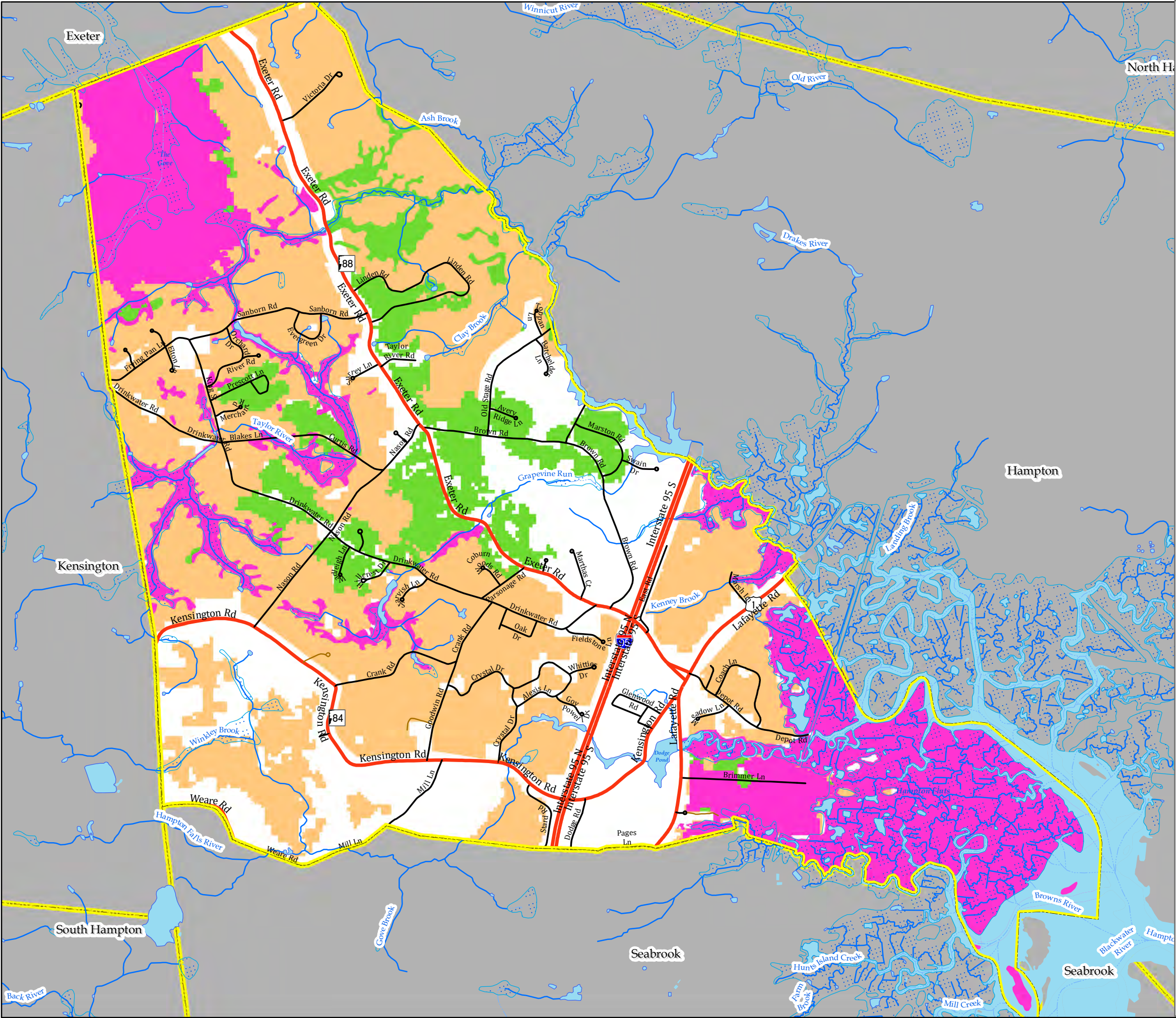
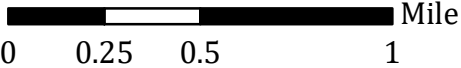
- Tier 1 - Highest Ranked Habitat in NH
- Tier 2 - Highest Ranked Habitat in Biological Region
- Tier 3 - Supporting Landscapes

The NHF&G released the NH Wildlife Action Plan in 2005, it was subsequently updated in 2010. This data was created by aggregating the highest quality habitats within each habitat type and then reranking based on co-occurrence. This data shows the most critical wildlife habitat locations and thus, important wildlife areas.

- | | |
|-------------------|-----------------|
| Town Boundary | Waterbody |
| State Road | Swamp/Marsh |
| Local Road | Stream / River |
| Unmaintained Road | Other Flow Line |
| Private Road | |



1 in = 0.5 miles



Legend

Land Conservation Plan
for NH's Coastal Watershed (2006)

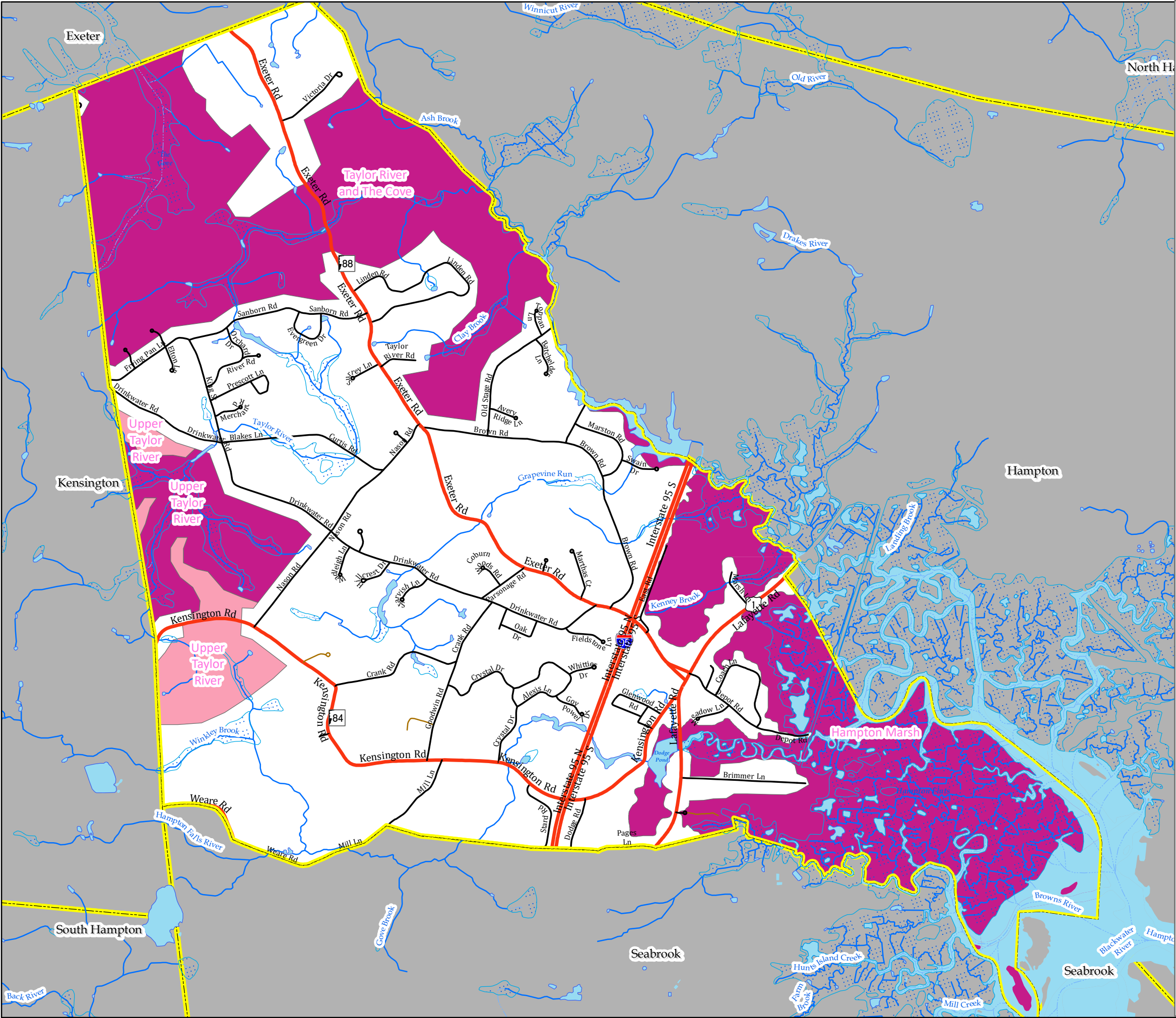
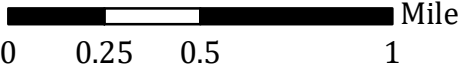
- Core (Highest Value)
- Landscape (High Value)

This dataset is the precursor to the Land Conservation Plan for the Merrimack Watershed. This dataset integrates best available natural resource data with expert judgment to prioritize land protection to protect water quality, habitat, farms and forests, and recreational open space. The resultant data is broken down into 2 levels, a Core Area that is the highest ranked areas and Supporting Natural Landscape, which is the second tier of habitat. The Core habitat contains the essential natural resources for which the focus area was identified, with the boundary fitted to the real world of roads, forest edges, rivers and wetlands. The supporting natural landscape is comprised of natural lands that buffer and sometimes link core areas and help to maintain habitat and ecological processes.

- | | |
|-------------------|-----------------|
| Town Boundary | Waterbody |
| State Road | Swamp/Marsh |
| Local Road | Stream / River |
| Unmaintained Road | Other Flow Line |
| Private Road | |



1 in = 0.5 miles



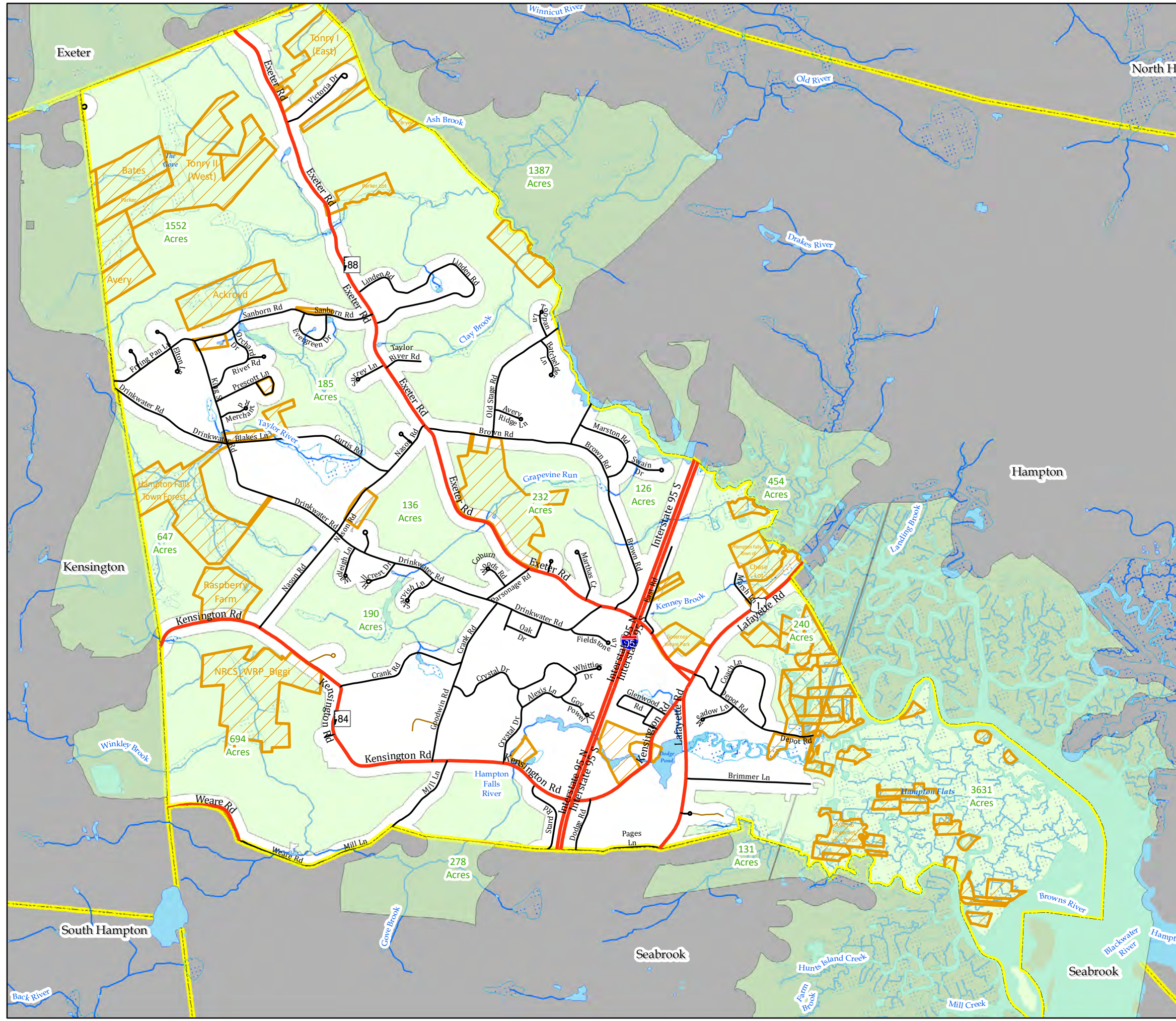
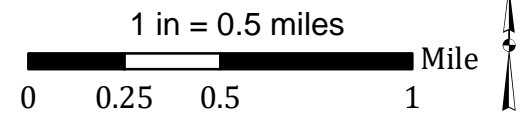
Legend

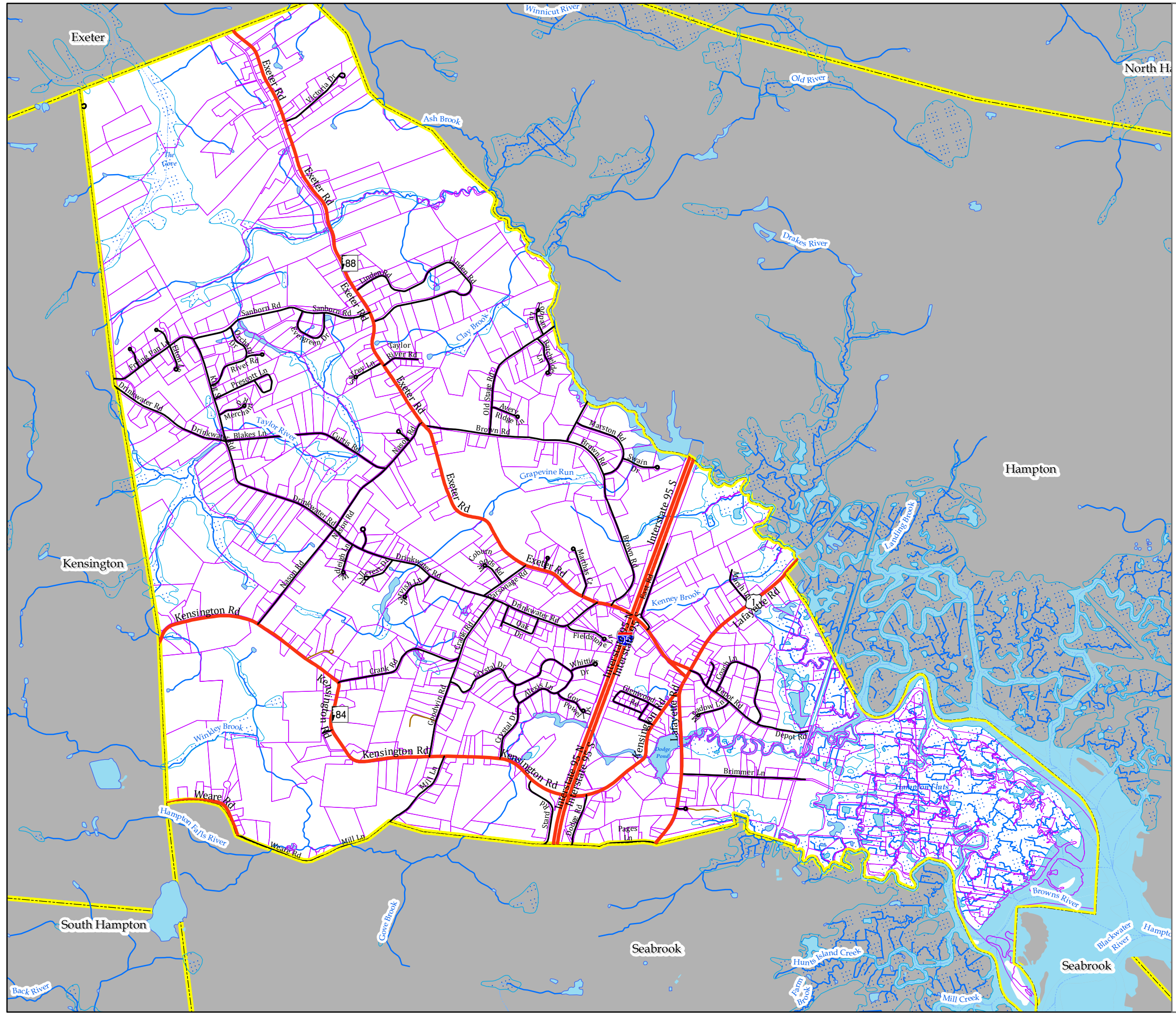
- GRANIT Conservation / Public Lands (2015)
- Unfragments Blocks (Greater than 100 Ac)

Conservation Lands are from the NH GRANIT database. This database includes parcels of land of two or more acres that are mostly undeveloped and are protected from future development. The data was developed from the records of the Society for the Protection of NH Forests (SPNHF), many of the state agencies, and original research from deeds and tax maps. The last update was completed in April of 2012. Additional parcels presented here are the result of more recent mapping work by RPC in an effort to collect other known conservation lands that are not currently listed in the GRANIT database.

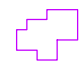
Conservation Lands are from the GRANIT Conservation/Public Lands data. This layer contains a digital record of parcels of land of two or more acres that are mostly undeveloped and are protected from future development. Smaller parcels that adjoin previously mapped parcels or represent unique features, such as a bog or state-owned boat ramp, may also be included in the data layer. The data was developed from the records of the Society for the Protection of NH Forests (SPNHF), many of the state agencies, and original research from deeds and tax maps. The last update was completed in November of 2012 by NH GRANIT at UNH, Durham and The Nature Conservancy.










- Town Boundary
- State Road
- Local Road
- Unmaintained Road
- Private Road
- Waterbody
- Swamp/Marsh
- Stream / River
- Other Flow Line

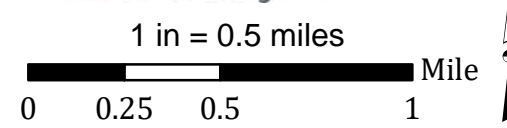


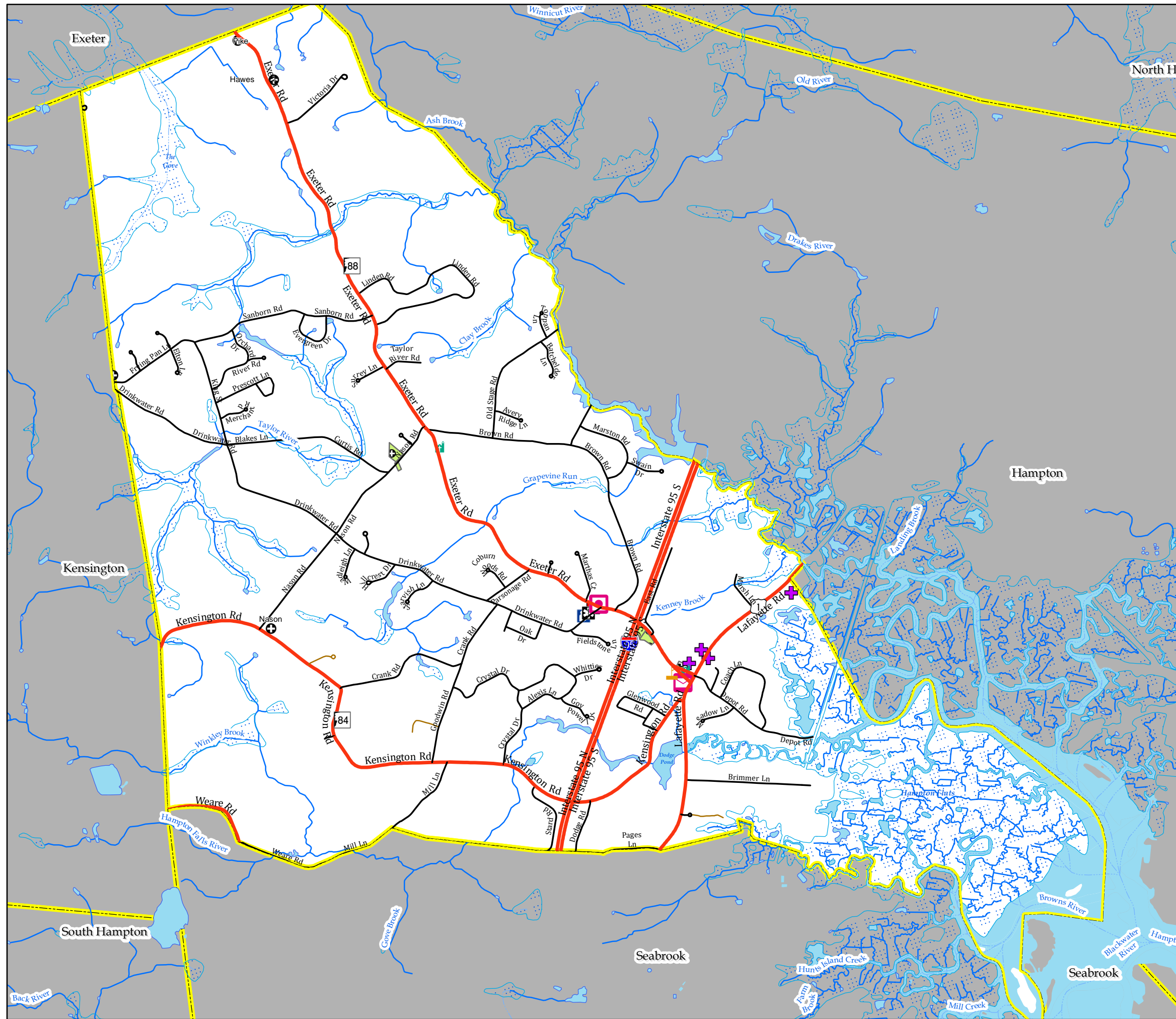


Legend

 2013 Parcels

- | | |
|---|---|
|  Interstate/ State |  Waterbody |
|  Local |  Swamp/Marsh |
|  Private |  Stream / River |
|  Not Maintained |  Other Flow Line |
|  Town Boundary | |

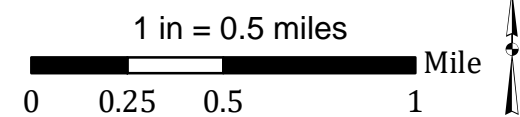


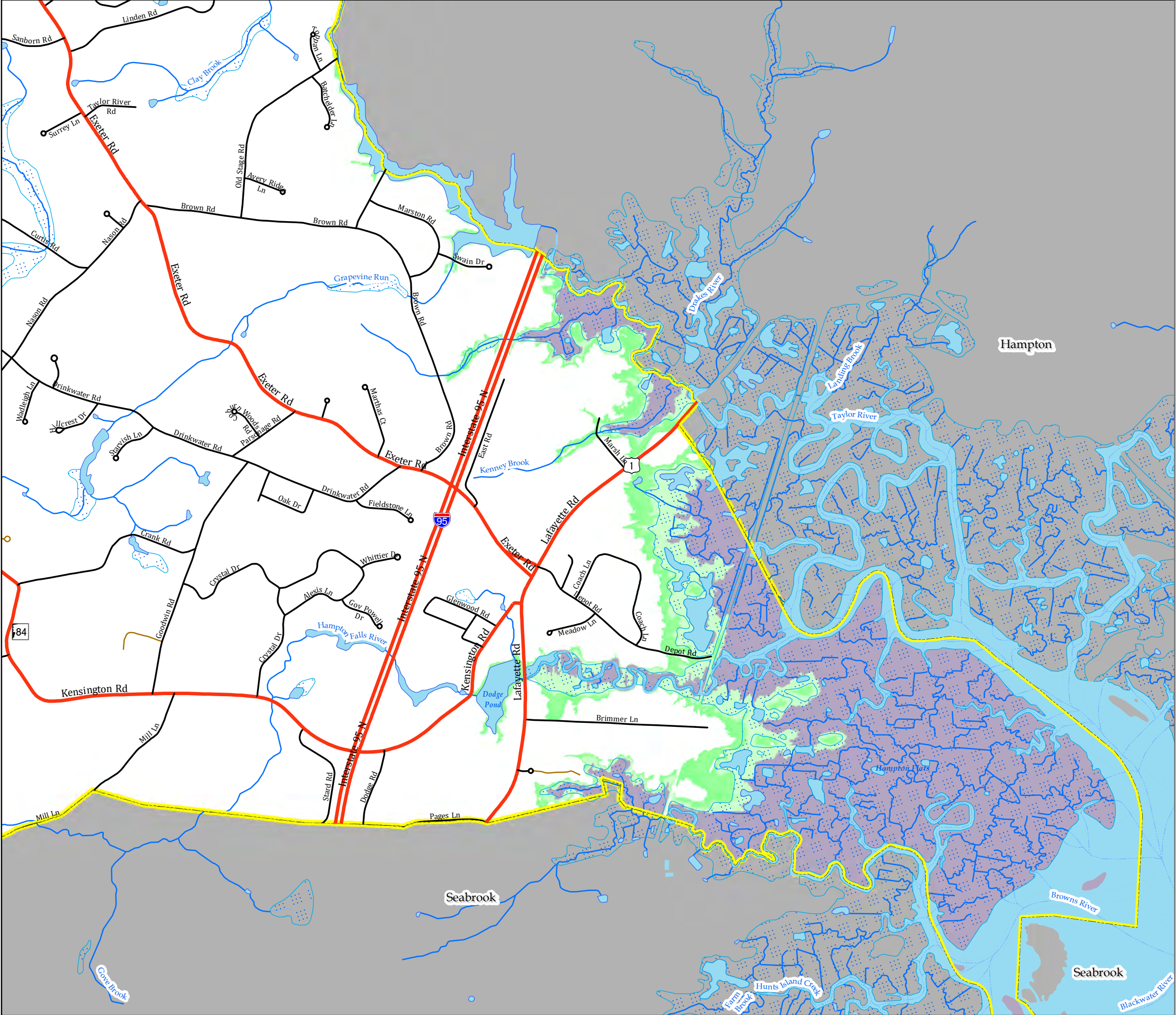


Legend

- Elementary School
- Fire/Police Station
- Historical Society
- Library
- Municipal Office
- Other
- Place of Worship
- Post office
- Historic Graveyards (larger)
- Historic Graveyards (smaller)

- Interstate/ State
- Local
- Private
- Not Maintained
- Town Boundary
- Waterbody
- Swamp/Marsh
- Stream / River
- Other Flow Line





Legend

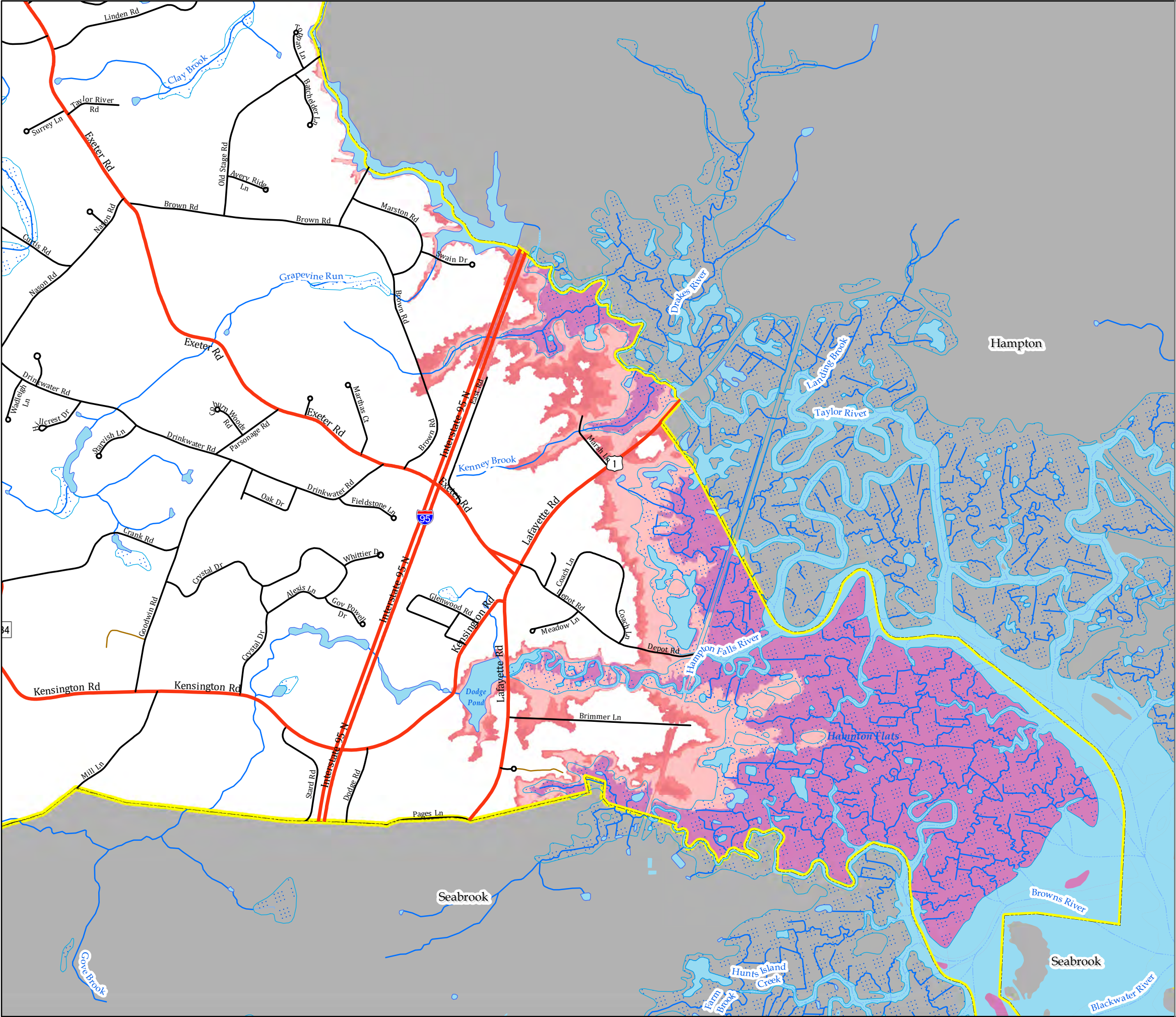
- Approx. MHHW - Tidal Extent
- Extent of Sea-Level Rise of 1.7 feet
- Extent of Sea-Level Rise of 4.0 feet
- Extent of Sea-Level Rise of 6.3 feet

- | | |
|-------------------|-----------------|
| Town Boundary | Waterbody |
| State Road | Swamp/Marsh |
| Local Road | Stream / River |
| Unmaintained Road | Other Flow Line |
| Private Road | |



1 in = 1,800 feet
0 0.25 0.5 Mile





Legend

- Approx. MHHW - Tidal Extent
- Extent of Sea-Level Rise of 1.7 feet with Storm Surge
- Extent of Sea-Level Rise of 4.0 feet with Storm Surge
- Extent of Sea-Level Rise of 6.3 feet with Storm Surge

- Town Boundary
- State Road
- Local Road
- Unmaintained Road
- Private Road
- Waterbody
- Swamp/Marsh
- Stream / River
- Other Flow Line

ROCKINGHAM
PLANNING
COMMISSION
theRPC.org

1 in = 1,800 feet

0 0.25 0.5 Mile

